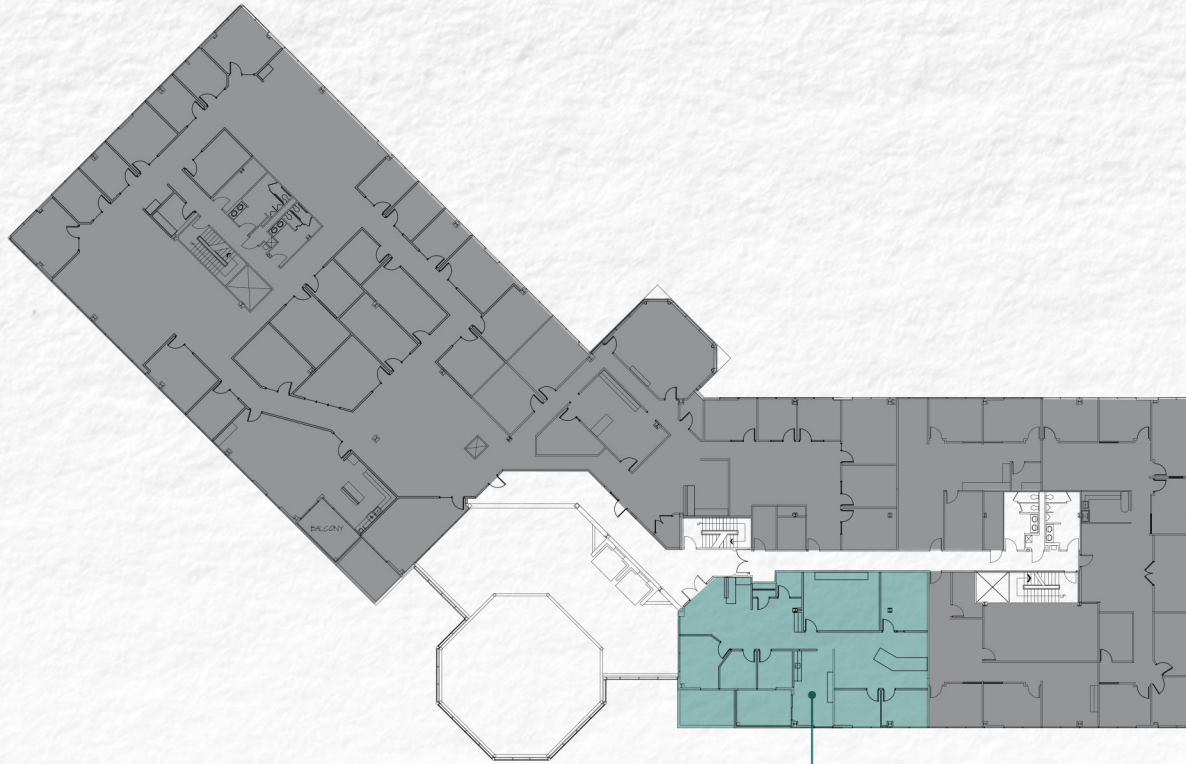


CASTLE CREEK VI

# 4th Floor

cast|e  
CREEK



- LEASED
- AVAILABLE

**AVAILABLE**  
SUITE 440  
2,632 RSF

## FOR MORE INFORMATION, PLEASE CONTACT:

**DAVID A. MOORE, CCIM, SIOR**  
Managing Director  
Mobile: 317-690-0617  
[david.moore@cushwake.com](mailto:david.moore@cushwake.com)

**MATT BOYD**  
Senior Associate  
Mobile: 317-985-2693  
[matt.boyd@cushwake.com](mailto:matt.boyd@cushwake.com)

